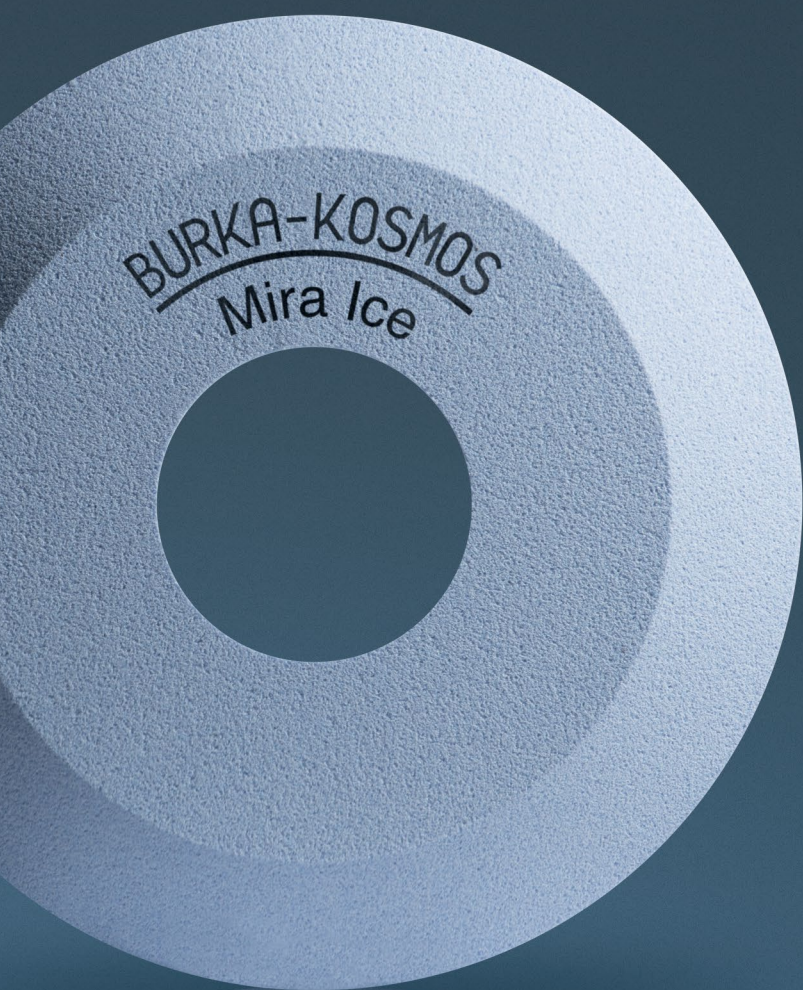


NEW



## MIRA ICE

VITRIFIED BONDED PROFILE GRINDING  
WHEELS FOR GEAR GRINDING

# MIRA ICE

The MIRA ICE product line was developed together with established TYROLIT experts in order to meet the requirements for grinding large gears. A new approach to development enables results to be achieved in terms of economic efficiency and "cool" grinding that were previously unheard of. MIRA ICE has been further optimised on the basis of the leading product line from BURKA-KOSMOS and sets new standards throughout the industry.

**+ Cool grinding:** The use of new grain qualities and the new high-strength bond system guarantees particularly cool grinding.

**+ Optimised economic efficiency:** Longer dressing cycles and short grinding times significantly reduce the processing costs per component.

**+ Highest process stability:** Despite improved performance parameters, the new grinding wheel design guarantees optimal grinding results every time.



## Application

Grinding of large and special gears



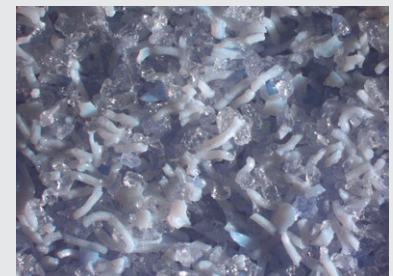
MIRA ICE is a continuation of our established approach: BURKA-KOSMOS offers the most economical grinding process for the profile grinding of gearing.

## New approach to development

New grain qualities and geometries

New, high-strength bond system

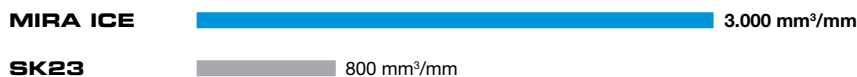
Increased porosity of the grinding wheel



MIRA ICE surface structure

## Example of application

Increase in stock removal volume  $V_w$  when deburring a size 7 gearing module with 102 teeth from 800 to 3000 mm<sup>3</sup>/mm.



Reduction in total machining time by 30 percent.

