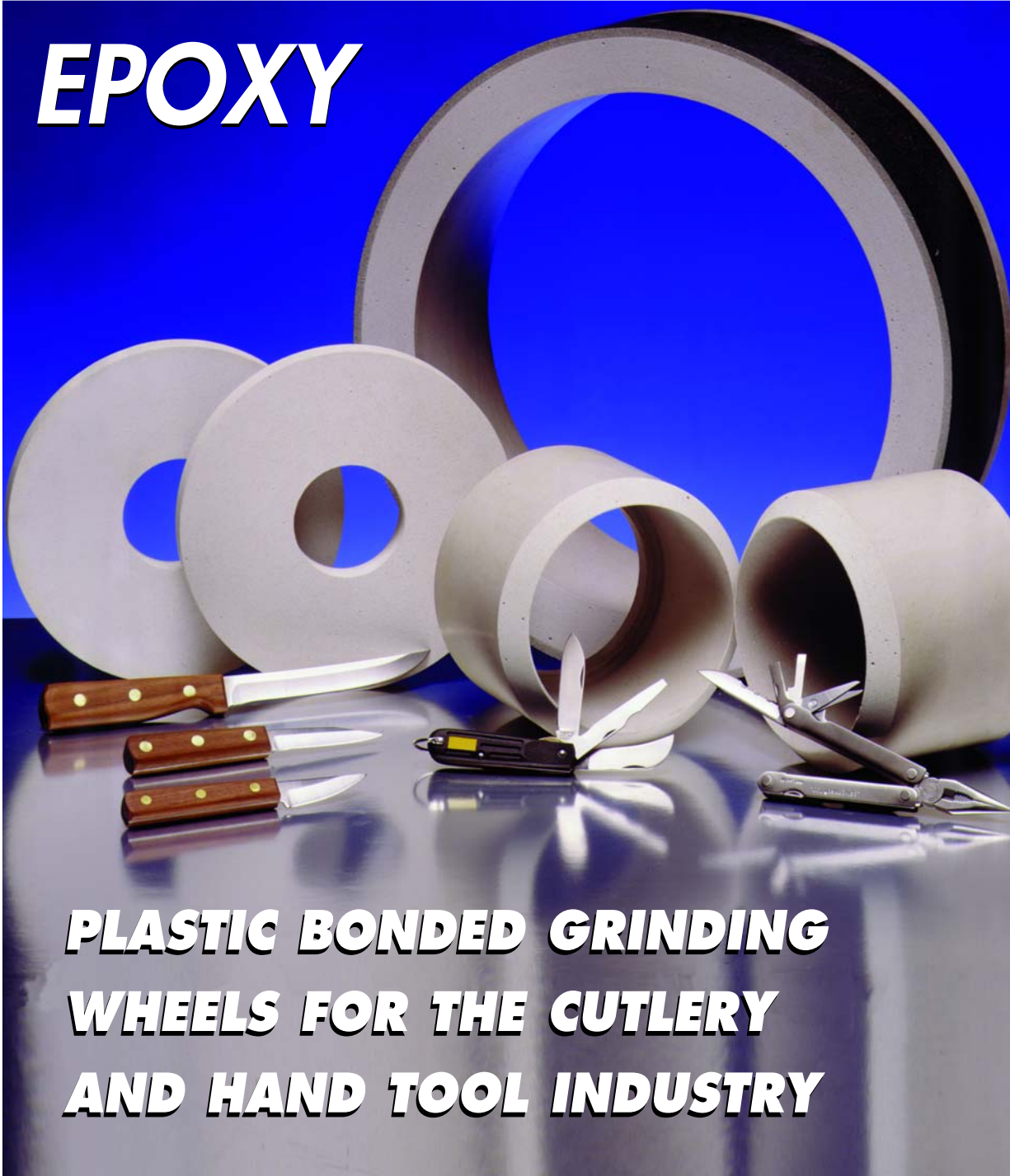


# **EPOXY**



**PLASTIC BONDED GRINDING  
WHEELS FOR THE CUTLERY  
AND HAND TOOL INDUSTRY**

**Radiac**  
**Abrasives**

*Precision Engineered Grinding Wheels*  
[www.radiac.com](http://www.radiac.com)

**AMERICAN MADE**



**AMERICAN OWNED**

# Superior Epoxy Bonded Grinding for



Cool cutting, fast stock removal, excellent finish, superior wheel life and attractive pricing are prerequisites for success in the demanding grinding of cutlery and specialty tools. **RADIAC ABRASIVES'** epoxy product line offers a controlled porosity bond combined with quality abrasives allowing for maximum productivity and life, regardless of blade/tool size and shape, material or machine tool. **Radiac Epoxy** products are available in all common wheel types and accommodate most standard machines and wheel speeds. The pre-

engineered bond system and abrasive allow for easy wheel specification regardless of the operation.

Give **Radiac Epoxy** the opportunity to enhance your productivity, lower your grinding costs and improve the "bottom line".

## AVAILABILITY

Abrasives	Aluminum Oxide	WA 8A WAA 96A 6A	Friable Semi-Friable Semi-Friable Mixture Premium Semi-Friable Mixture
	Silicon Carbide	GC C	Friable Durable
	Ceramic	8BP 7BW	Ceramic Abrasive Combination Premium Ceramic Combination
Grit Size	Coarse Medium Fine	36, 46, 60 80, 90, 100, 120 150, 180, 220, 280, 320	
Hardness	Soft Medium Hard	H, I, J K, L, M, N, O P, Q	
Bond	P4 P4G	Aggressive, High Stock Removal Cool Cutting, Ideal for Heat Reduction	

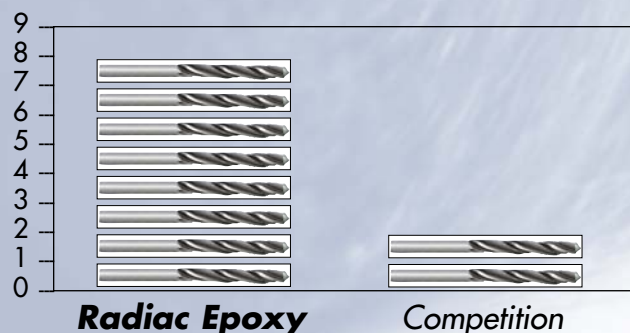
## Clearance Grind

10 x .500 x 3 Type 1

Material: Nitride Drills

Specification: 7BW1002-M-P4G-SS

### PARTS PER DRESS



**Radiac Epoxy**

**Competition**

### WHEEL COST PER DRESS



**Radiac Epoxy**

**Competition**

# the Cutlery and Hand Tool Industry



Precision Engineered Grinding Wheels

- Superior Performance
- Enhanced Productivity

## APPLICATION/RECOMMENDATION

APPLICATION	PART	MATERIAL	GRIND LENGTH	SPECIFICATION
<b>Hollow Grind</b> Type 6,6A,6B	Knife Blades	Carbon Steel	3" and less	8A120-H-P4
			Over 3"	8A80-H-P4
		Stainless Steel	3" and less	8A120-J-P4
			All	8A120-H-P4
<b>Hollow Grind</b> Type 1	Knife Blades	Carbon Steel	3" and less	8A120-M-P4
			Over 3"	8A80-M-P4
<b>Flat Grind</b> Type 2,2A,2B,52	Knife Blades	Carbon Steel	All	8A80-H-P4
		ATS-34	All	8A120-H-P4
	Putty Knives	Carbon Steel	All	8A120-H-P4
		Stainless Steel	All	8A80-H-P4
	Scraper Blades	Carbon Steel	All	8A120-J-P4
		Chisels	All	8A80-H-P4
<b>Flat Grind</b> Type 1	Rotary Blades	Carbon Steel	All	8A150-H-P4
		Stainless Steel	All	8A150-J-P4
	Surgical Blades	Stainless Steel	All	WAA320-H-P4
<b>Clearance Grind</b> Type 1	Drills/End Mills	Carbon Steel	All	7BW1002-M-P4G-SS
		Stainless Steel	All	7BW1002-M-P4G-SS

## Hollow Grind

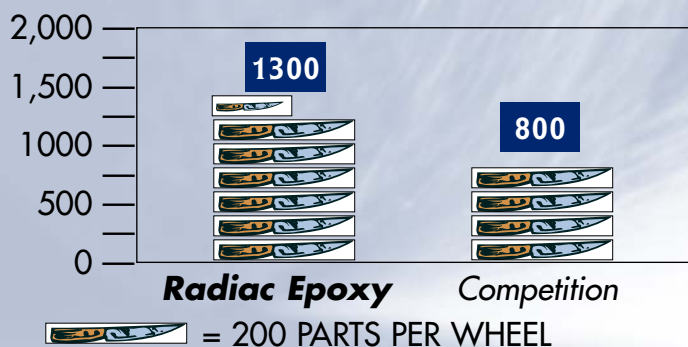
175mm x 125mm x 125mm 15mm Rim/15mm Back

Material: Carbon Steel Blades - 56Rc

Grind Size: L=3-5/8" W= .700" T= .075"

Specification: 8A80-H-P4

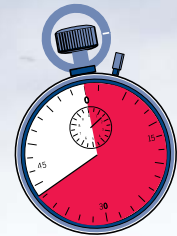
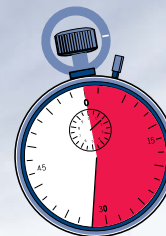
### PARTS



### CYCLE TIME

32 Seconds

39 Seconds



**Radiac Epoxy**

**Competition**

■ **CYCLE TIME**

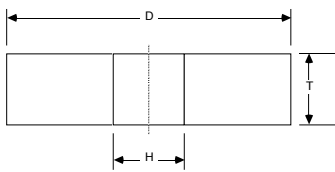
# Radiac Epoxy Wheels

- Custom made to your specifications
- Shortest lead times in the industry
- Guaranteed better performance

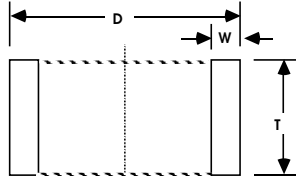


## STANDARD WHEEL SHAPES

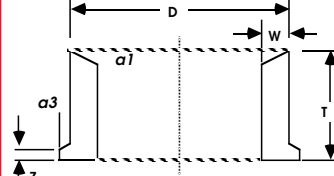
**Type 1**



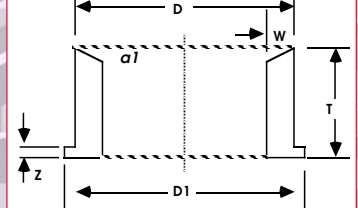
**Type 2**



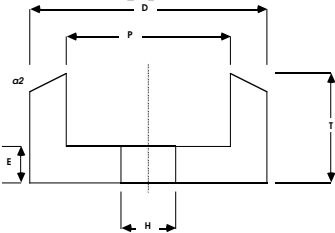
**Type 2a**



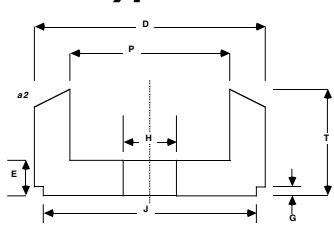
**Type 2b**



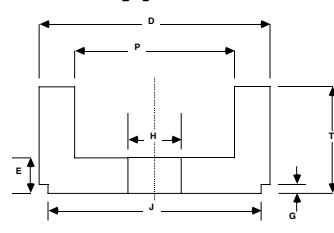
**Type 6**



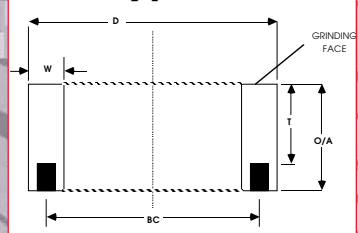
**Type 6a**



**Type 6b**



**Type 52**



Radiac Abrasives, Inc.  
1015 S. College Avenue  
P.O. Box 1410  
Salem, Illinois 62881

Tel: 800-851-1095 • 618-548-4200  
Fax: 888-244-8234 • 618-548-4207

[www.radiac.com](http://www.radiac.com)

**Radiac**  
Abrasives

Precision Engineered Grinding Wheels

AMERICAN  
MADE



AMERICAN  
OWNED

Distributed By

Rev 1-2007

An Authorized Radiac Distributor



MEMBER

